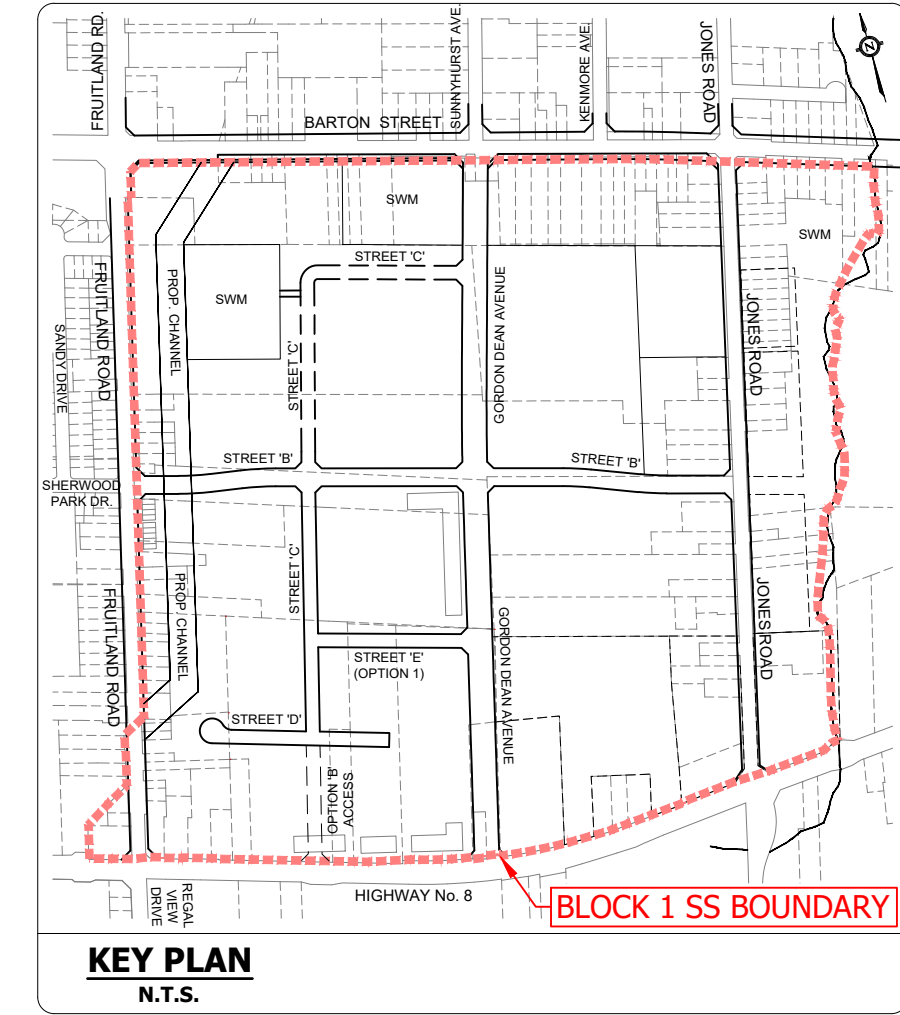
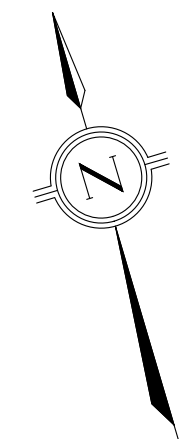
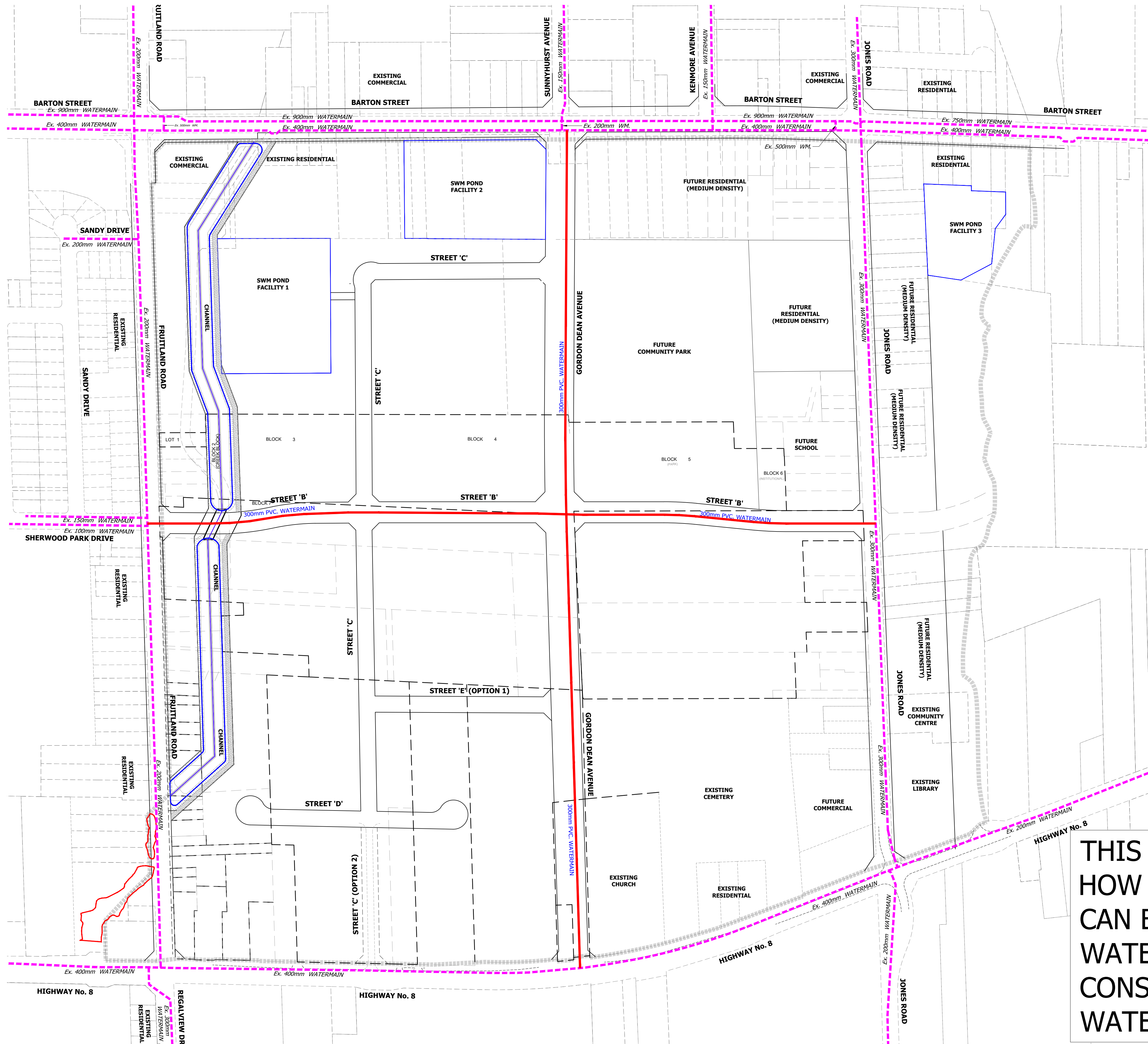


Conceptual Water Servicing



- LEGEND**
- LIMIT OF PROPERTY
 - PROPOSED 300mm PVC. WATERMAIN
 - - - - FUTURE 300mm PVC. WATERMAIN
 - - - - EXISTING WATERMAIN

BENCHMARK
 MONUMENT # 0720020001
 ROUND IRON BAR WITH BRASS CAP LOCATED IN STONEY CREEK 9m NORTH OF CENTRELINE OF BARTON STREET 5m WEST OF CENTRELINE OF SUNNYHURST AVENUE AND 4m EAST OF CENTRELINE OF DRIVEWAY TO HOUSE NO. 713.
 ELEVATION: 87.489m CGVD-1928-1978.

URBANTECH® Consulting
 A Division of Leighton-Zec West Ltd.
 2030 Bristol Circle, Suite 105
 Oakville, ON, L6H 0H2
 TEL 905.829.8818 • urbantech.com

THIS DIAGRAM ILLUSTRATES HOW THE SUBJECT LANDS CAN BE SERVICED FOR WATER THROUGH THE CONSTRUCTION OF NEW WATER INFRASTRUCTURE.

BLOCK 1 SERVICING STRATEGY
 CITY OF HAMILTON

CONCEPTUAL WATER SERVICING

PROJECT No.	DATE	SCALE	DWG No.
20-263	SEPT. 2023	1:2500	PIC-13

F:\PROJECTS\20-263\BLOCK1 SS - HAMILTON\DRAWINGS\200 - PIC-13.DWG