
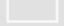





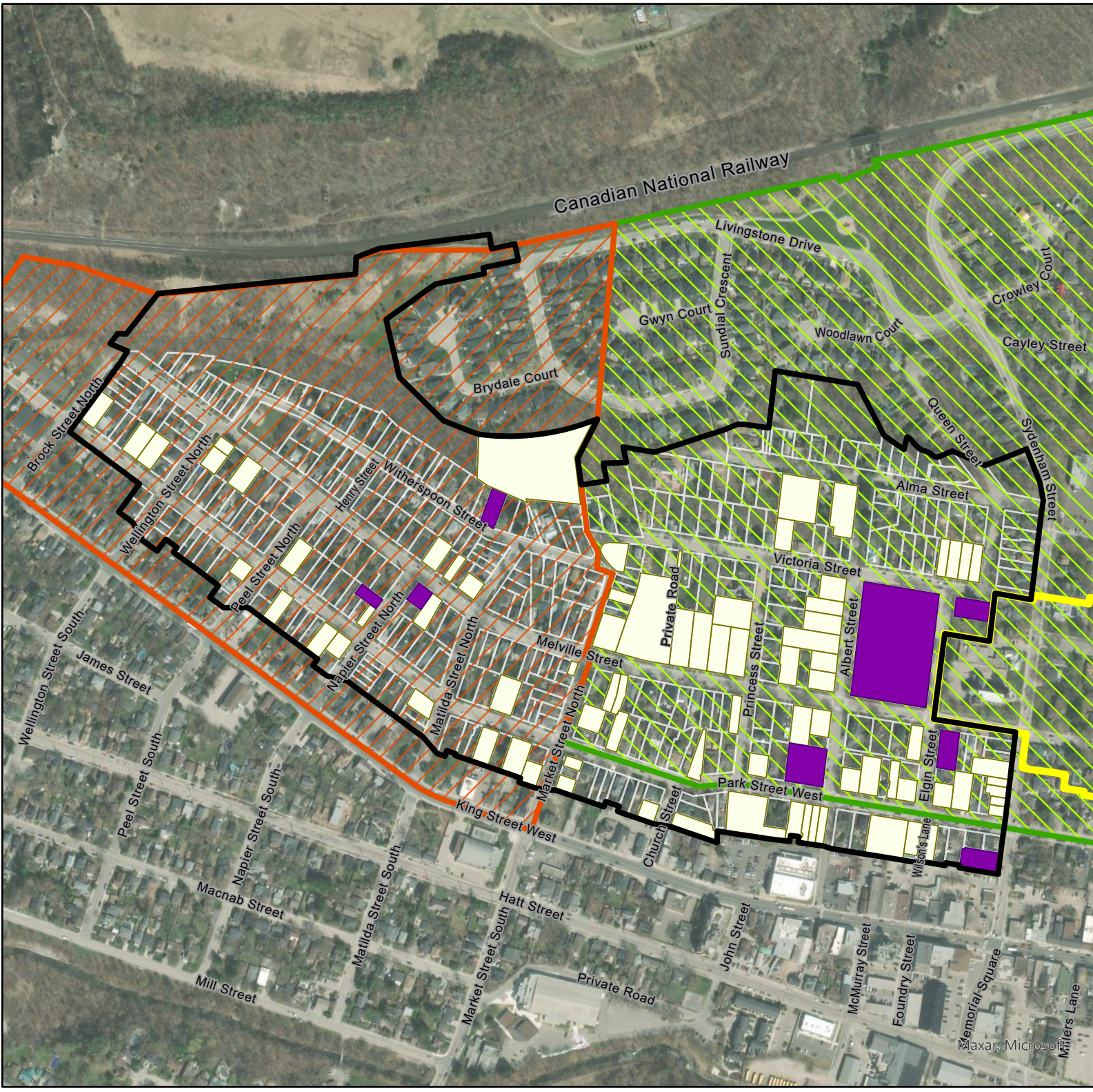


# Figure 3 Heritage Status

**Melville Street Heritage Conservation District**  
Dundas  
City of Hamilton, Ontario

## LEGEND

-  Study Area
-  Parcels
-  Cross-Melville Heritage Conservation District
- Heritage Status**
-  Designated (Part IV) (8)
-  Inventoried (80)
- Neighbourhoods**
-  Colborne
-  Sydenham



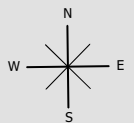
Source: City of Hamilton Open Data (c) 2023,  
Aerial from MAXAR (c) 2021

Date: 25 May 2023

File: 0727AV

Scale: 1:5,500

Drawn: CF



Document Path: K:\0727AV- Dundas Heritage Project\GIS\0727AV\_MelvilleSt\_HeritageInventory\_v2.aprx



**PLANNING  
URBAN DESIGN  
& LANDSCAPE  
ARCHITECTURE**

200-540 BINGEMANS CENTRE DRIVE, KITCHENER, ON, N2B 3X9 | P: 519.576.3650 | WWW.MHBCPLAN.COM

# Figure 4 Zoning

**Melville Street Heritage Conservation District**  
Dundas  
City of Hamilton, Ontario

## LEGEND

Study Area

Parcels

Zoning By-Law No. 3581-86 Descriptions

Light Industrial

Low Density Residential

Single Detached Residential

Park And Recreation

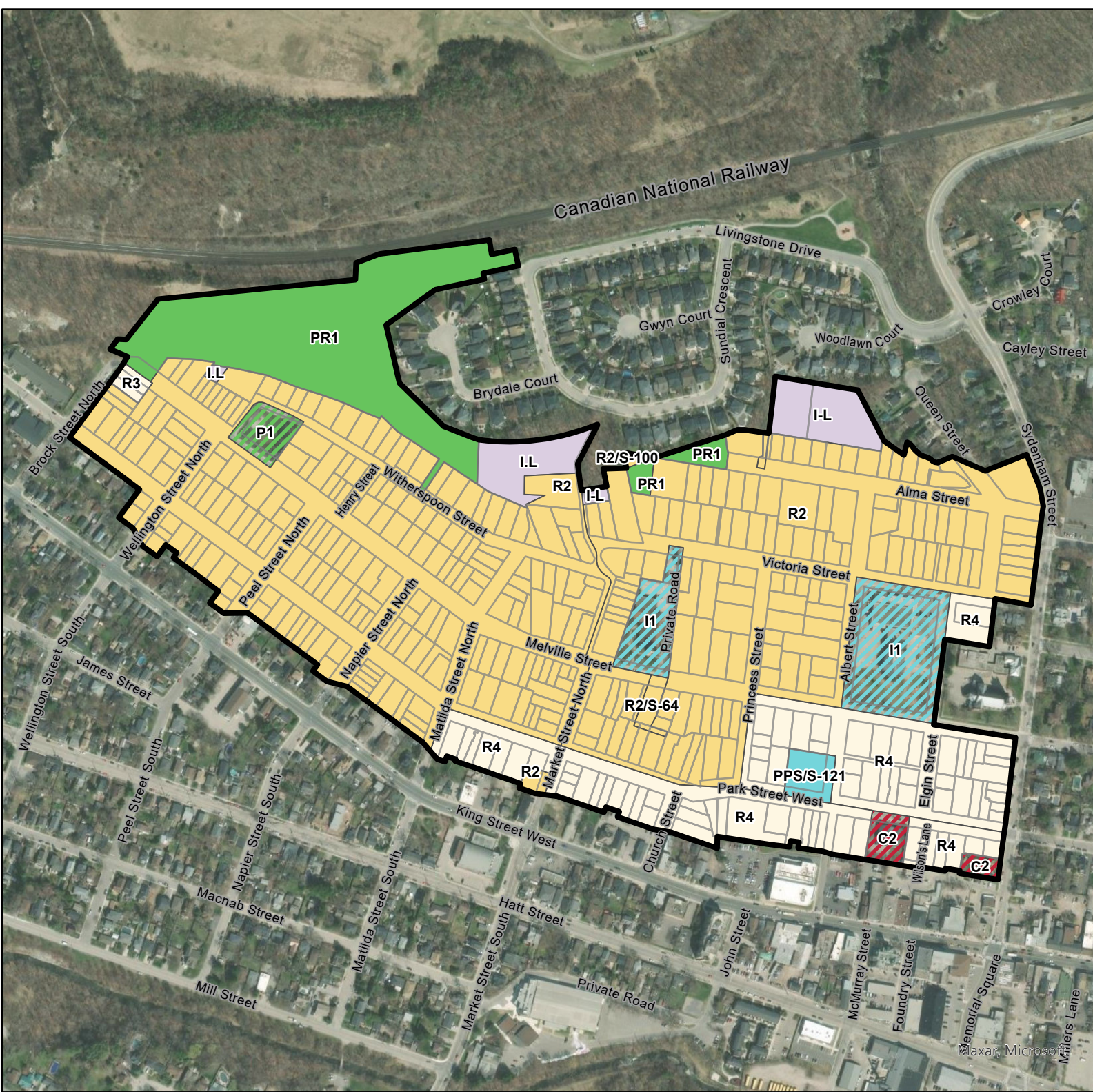
Public And Private Service

Zoning By-Law No. 05-200 Descriptions

Neighbourhood Commercial

Neighbourhood Institutional

Neighbourhood Park



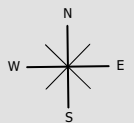
Source: City of Hamilton Open Data (c) 2023,  
Aerial from MAXAR (c) 2021

Date: 27 May 2023

File: 0727AV

Scale: 1:5,500

Drawn: CF



Document Path: K:\0727AV- Dundas Heritage Project\GIS\0727AV\_MelvilleSt\_HeritageInventory\_v2.aprx



**PLANNING  
URBAN DESIGN  
& LANDSCAPE  
ARCHITECTURE**

200-540 BINGEMANS CENTRE DRIVE, KITCHENER, ON, N2B 3X9 | P: 519.576.3650 | WWW.MHBCPLAN.COM






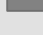
# Figure 5 Type of Property

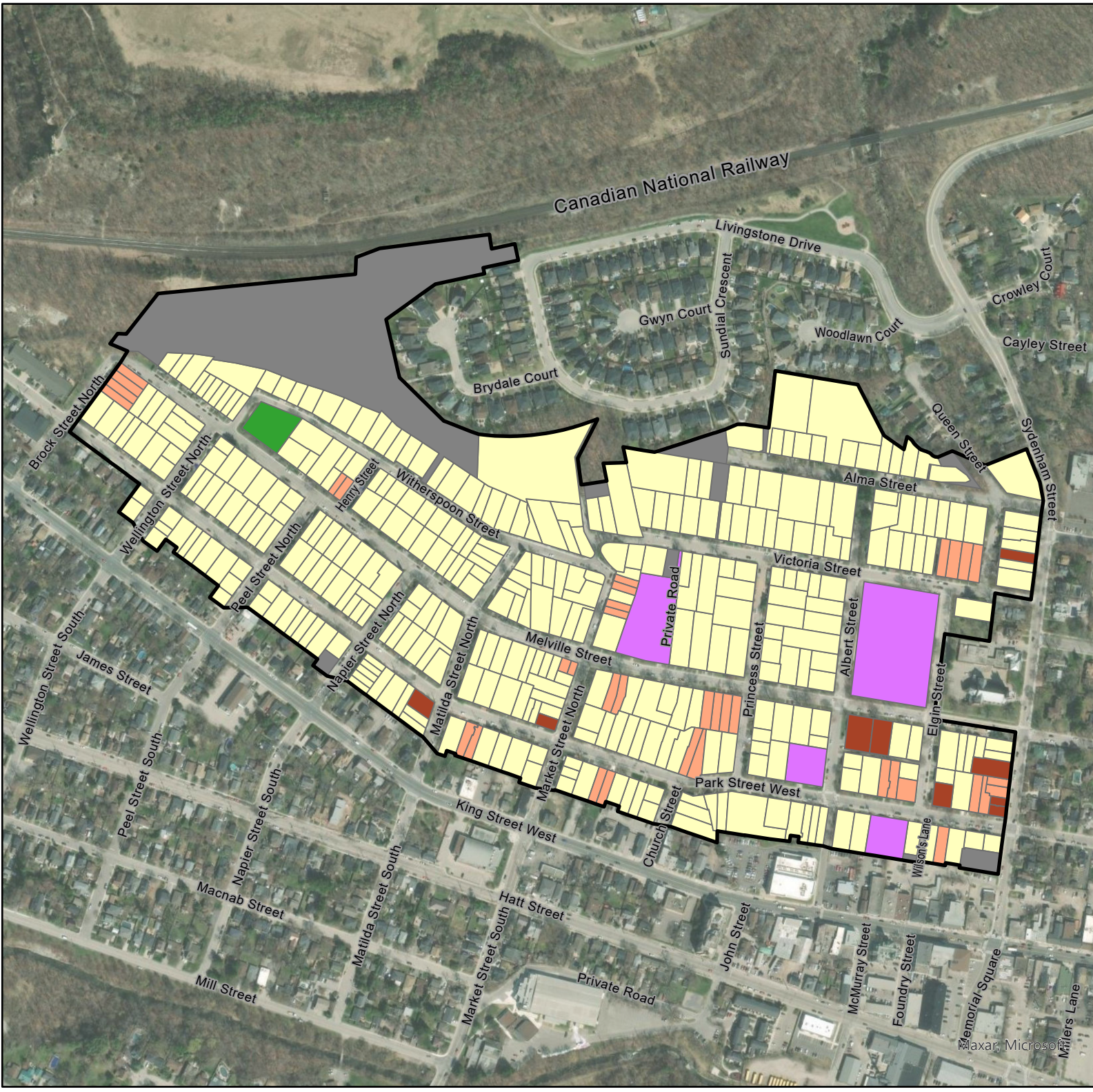
Melville Street Heritage Conservation District  
Dundas  
City of Hamilton, Ontario

## LEGEND

 Study Area

### Type of Property

-  Single-detached (359)
-  Semi-detached, related (37)
-  Multi-residential (9)
-  Institutional or Public Building (4)
-  Landscape Feature (1)
-  N/A or Other (11)



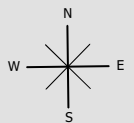
Source: City of Hamilton Open Data (c) 2023,  
Aerial from MAXAR (c) 2021

Date: 27 May 2023

File: 0727AV

Scale: 1:5,500

Drawn: CF



Document Path: K:\0727AV- Dundas Heritage Project\GIS\0727AV\_MelvilleSt\_HeritageInventory\_v2.aprx



PLANNING  
URBAN DESIGN  
& LANDSCAPE  
ARCHITECTURE

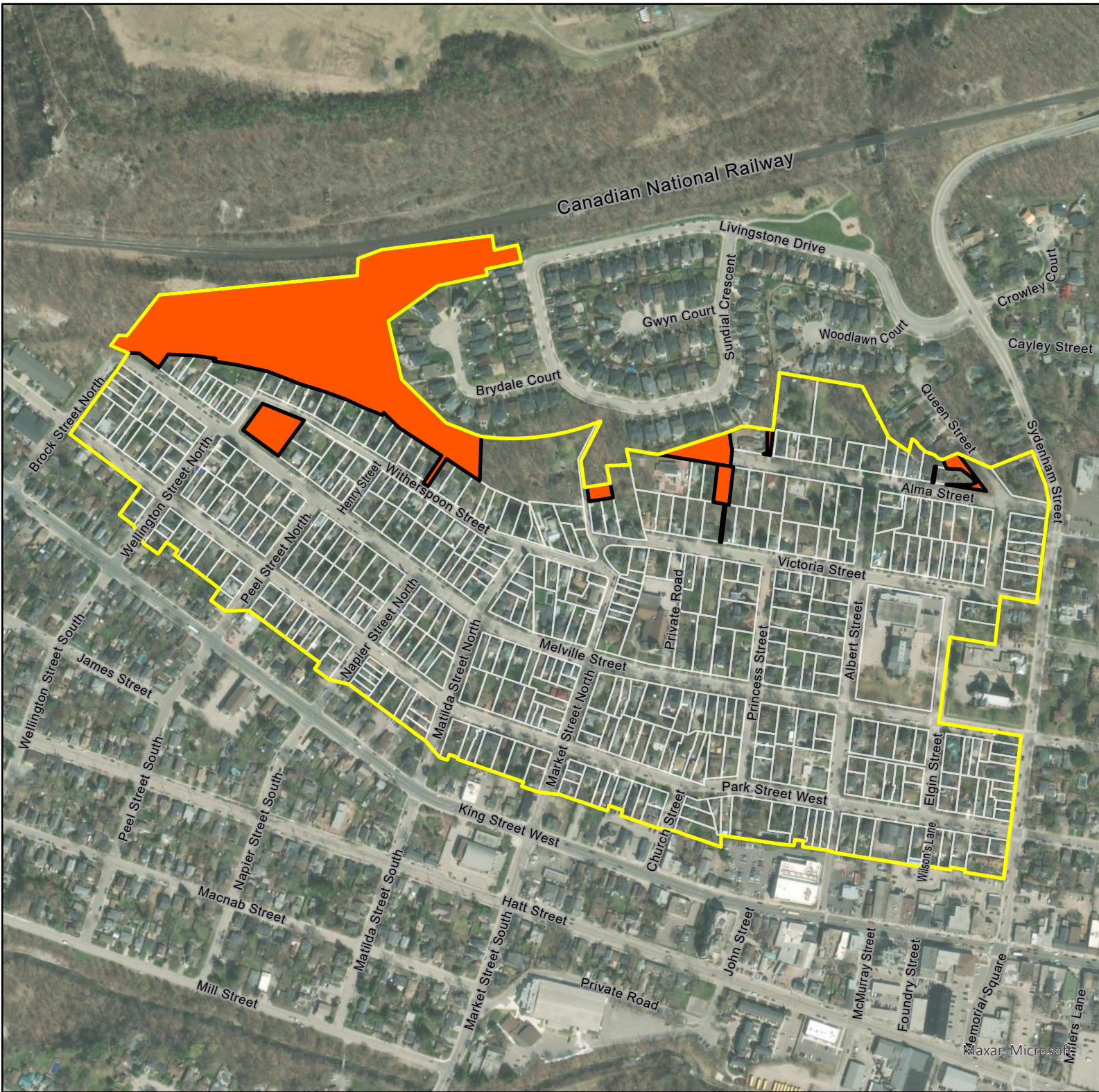
200-540 BINGEMANS CENTRE DRIVE, KITCHENER, ON, N2B 3X9 | P: 519.576.3650 | WWW.MHBCPLAN.COM

# Figure 6 Vacant Properties (Contributing)

Melville Street Heritage Conservation District  
Dundas  
City of Hamilton, Ontario

### LEGEND

- Vacant Properties (8)
- Study Area
- Parcels



Source: City of Hamilton Open Data (c) 2023,  
Aerial from MAXAR (c) 2021

Date: 27 May 2023  
File: 0727AV  
Scale: 1:5,500  
Drawn: CF












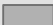
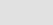


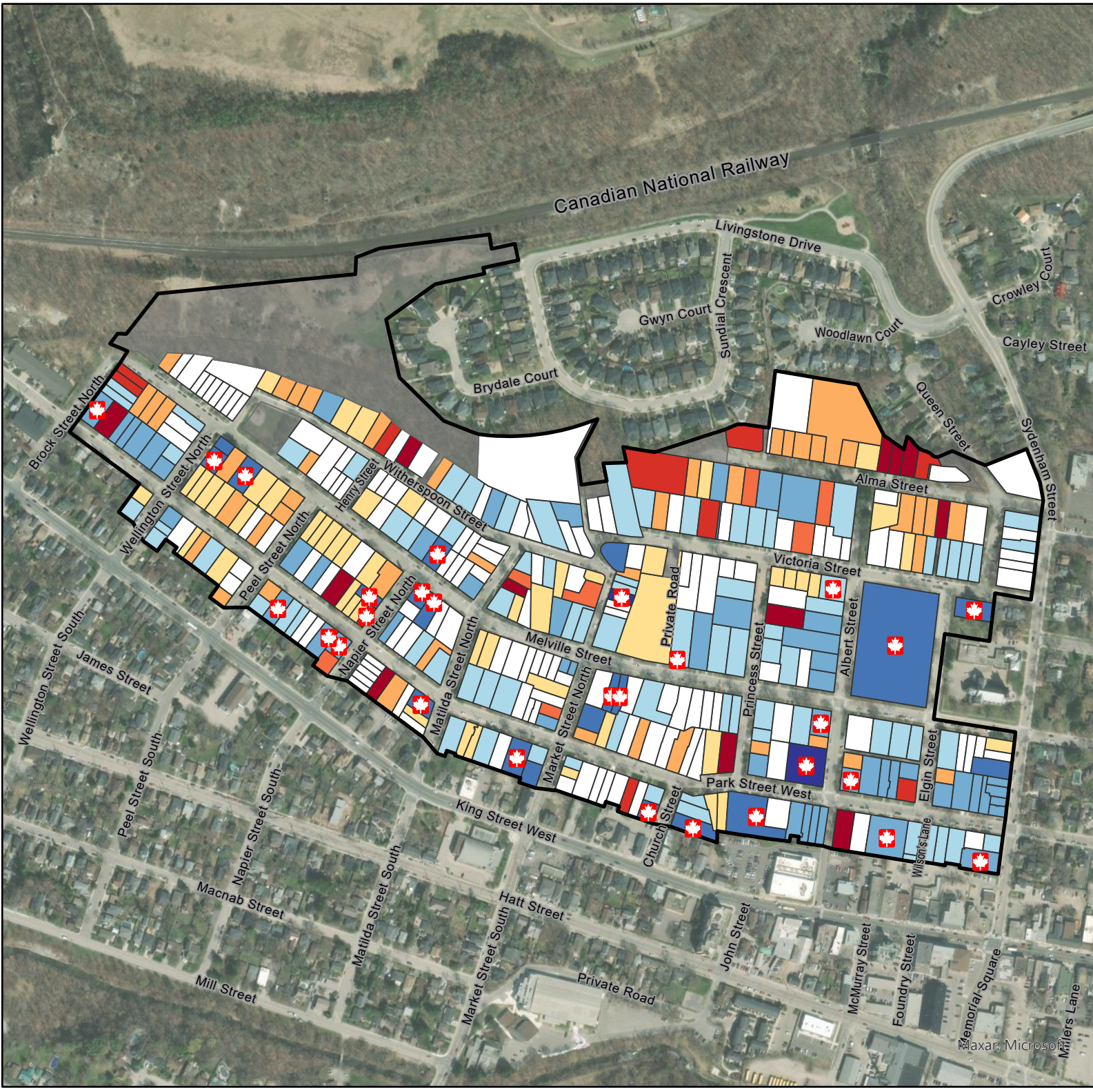
Document Path: K:\0727AV- Dundas Heritage Project\GIS\0727AV\_MelvilleSt\_HeritageInventory\_v2.aprx

# Figure 7 Construction Dates (20 years)

Melville Street Heritage Conservation District  
Dundas  
City of Hamilton, Ontario

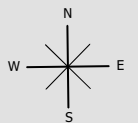
### LEGEND

-  Pre-1867 Buildings
  -  Study Area
- Construction Date**
-  1830 to 1839 (2)
  -  1840 to 1859 (21)
  -  1860 to 1879 (53)
  -  1880 to 1899 (80)
  -  1900 to 1919 (135)
  -  1920 to 1939 (50)
  -  1940 to 1949 (44)
  -  1960 to 1979 (7)
  -  1980 to 1999 (9)
  -  2000 to Present (12)
  -  N/A or Unknown (8)



Source: City of Hamilton Open Data (c) 2023,  
Aerial from MAXAR (c) 2021

Date: 27 May 2023  
File: 0727AV  
Scale: 1:5,500  
Drawn: CF



Document Path: K:\0727AV- Dundas Heritage Project\GIS\0727AV\_MelvilleSt\_HeritageInventory\_v2.aprx

# Figure 8 Architectural Styles (General)

**Melville Street Heritage Conservation District**  
Dundas  
City of Hamilton, Ontario

## LEGEND

Study Area

Parcels

## Architectural Style / Influence

- Georgian / Loyalist (1784 - 1860) (1)
- Classical Revival (1830 - 1860) and Neo-Classical (1800 - 1860) (3)
- Regency (1830 - 1860) (1)
- Gothic Revival (1830 - 1900) (16)
- Ontario Cottage (1840 - 1900) (11)
- Worker's Cottage (1850 - 1910) (45)
- Romanesque Revival (1850 - 1910) (2)
- Late Victorian (1850 - 1910) (11)
- Queen Anne (1880 - 1910) (33)
- Italianate (1850 - 1900) (3)
- Edwardian (1900 - 1930), American Foursquare, and Vernacular (79)
- Bungalow (1900 - 1945) (18)
- Neo-Gothic (1900 - 1945) (1)
- Colonial Revival (1900 - Present); Period Revivals (1900 - Present) (19)
- Craftsman / Prairie (1900s - 1930s) (1)
- Victory Housing (1940 - 1950) (3)
- 1950s Contemporary (1945 - 1965) (7)
- Post Modern (1970 to Present) (23)
- Combination (6)
- Altered / Unknown / Other (128)

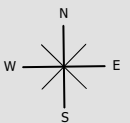
Source: City of Hamilton Open Data (c) 2023,  
Aerial from MAXAR (c) 2021

Date: 24 May 2023

File: 0727AV

Scale: 1:5,500

Drawn: CF

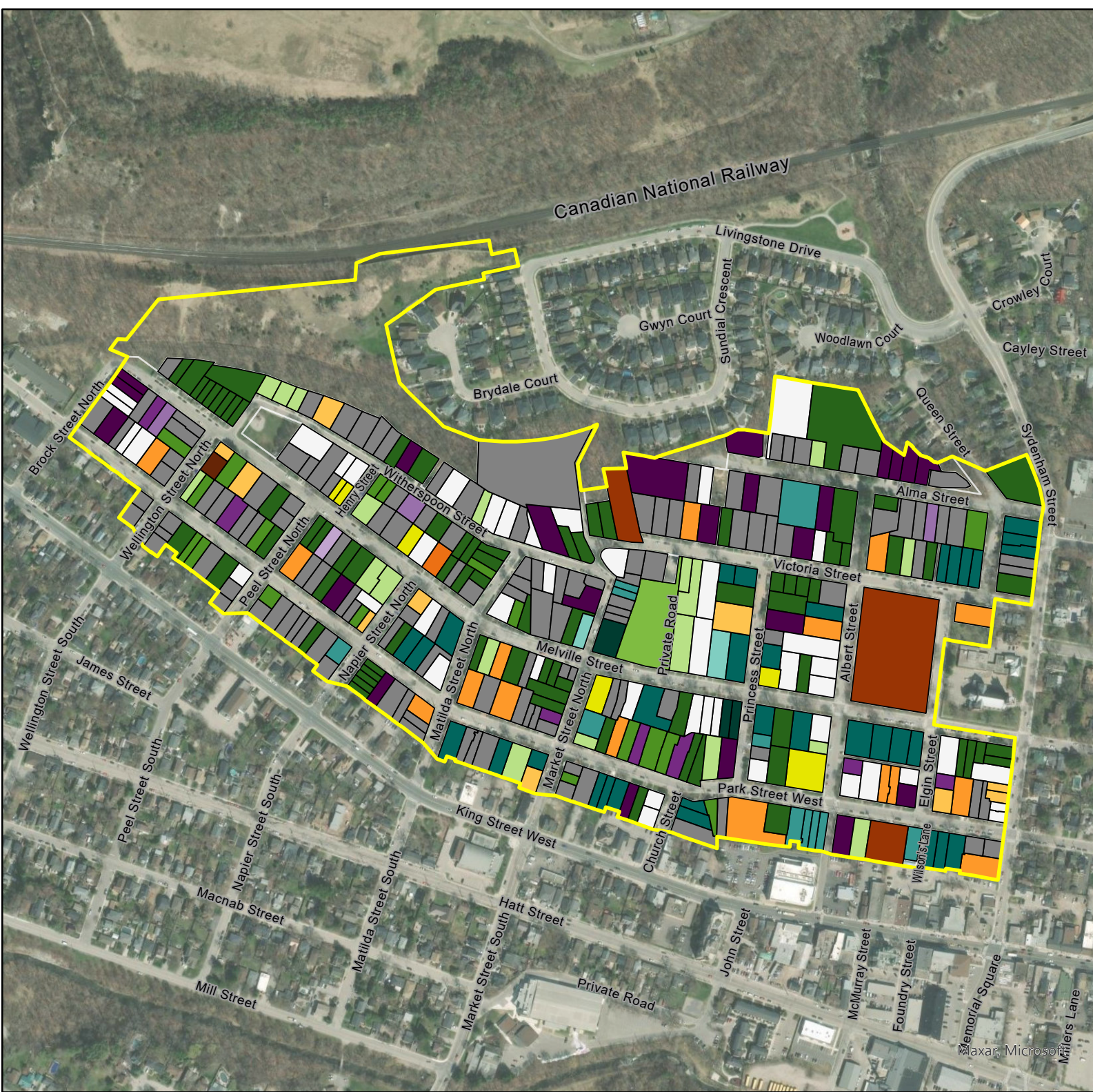


Document Path: K:\0727AV- Dundas Heritage Project\GIS\0727AV\_MelvilleSt\_HeritageInventory\_v2.aprx



**PLANNING  
URBAN DESIGN  
& LANDSCAPE  
ARCHITECTURE**

200-540 BINGEMANS CENTRE DRIVE, KITCHENER, ON, N2B 3X9 | P: 519.576.3650 | WWW.MHBCPLAN.COM



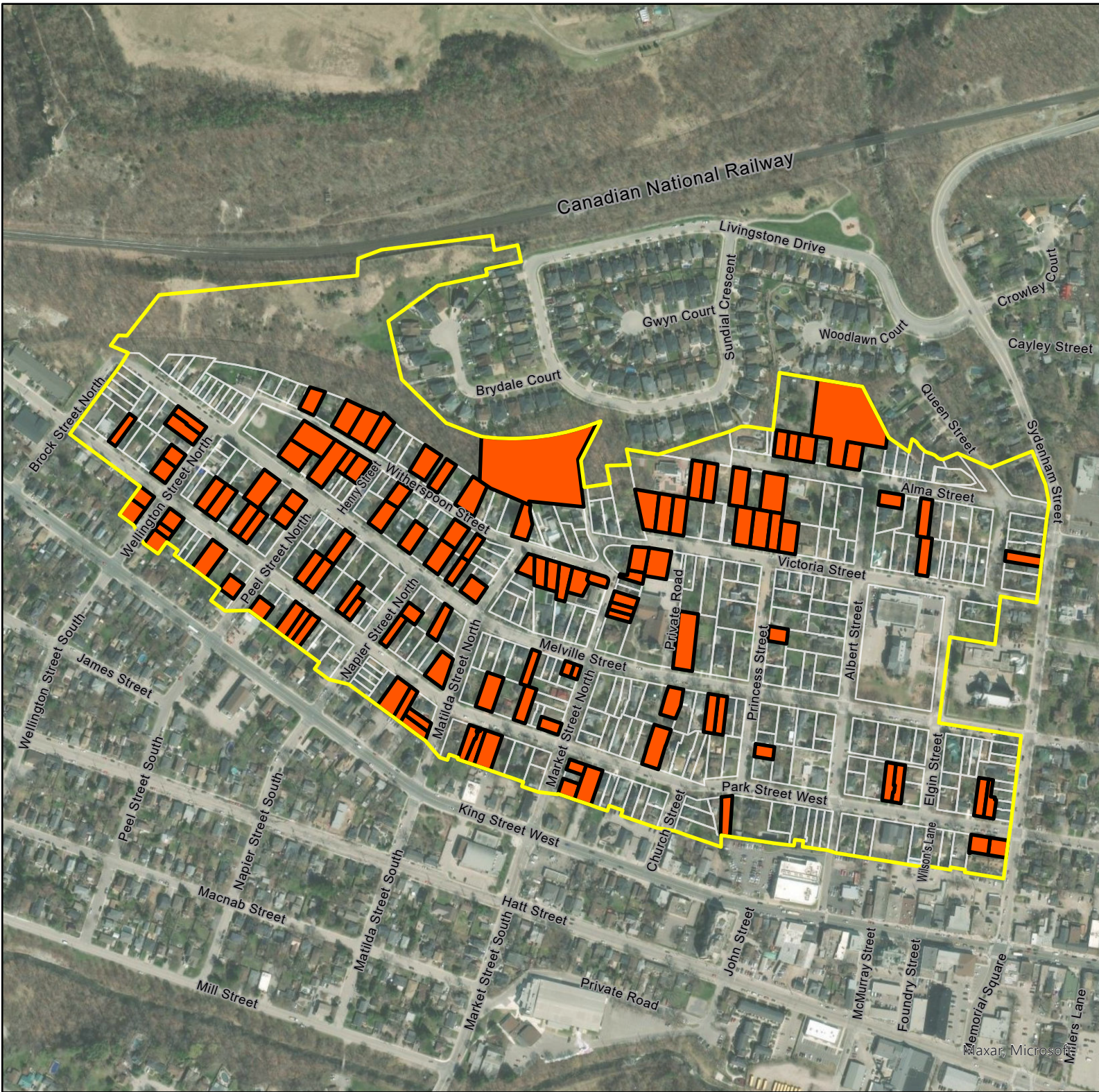


# Figure 10 Significantly Altered Properties (Non- contributing)

Melville Street Heritage Conservation District  
Dundas  
City of Hamilton, Ontario

### LEGEND

- Significantly altered/significant loss of heritage integrity (116)
- Study Area
- Parcels



Source: City of Hamilton Open Data (c) 2023,  
Aerial from MAXAR (c) 2021

Date: 27 May 2023

File: 0727AV

Scale: 1:5,500

Drawn: CF



Document Path: K:\0727AV- Dundas Heritage Project\GIS\0727AV\_MelvilleSt\_HeritageInventory\_v2.aprx



PLANNING  
URBAN DESIGN  
& LANDSCAPE  
ARCHITECTURE

200-540 BINGEMANS CENTRE DRIVE, KITCHENER, ON, N2B 3X9 | P: 519.576.3650 | WWW.MHBCPLAN.COM



# Figure 11 Building Heights

Melville Street Heritage Conservation District  
Dundas  
City of Hamilton, Ontario

### LEGEND

Study Area

Parcels

### No. of Storeys

1 (87)

1.5 (123)

2 (88)

2.5 (109)

3 (4)

Irregular (1)



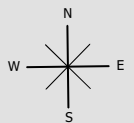
Source: City of Hamilton Open Data (c) 2023,  
Aerial from MAXAR (c) 2021

Date: 27 May 2023

File: 0727AV

Scale: 1:5,500

Drawn: CF



Document Path: K:\0727AV- Dundas Heritage Project\GIS\0727AV\_MelvilleSt\_HeritageInventory\_v2.aprx



PLANNING  
URBAN DESIGN  
& LANDSCAPE  
ARCHITECTURE

200-540 BINGEMANS CENTRE DRIVE, KITCHENER, ON, N2B 3X9 | P: 519.576.3650 | WWW.MHBCPLAN.COM









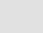
# Figure 12 Building Cladding

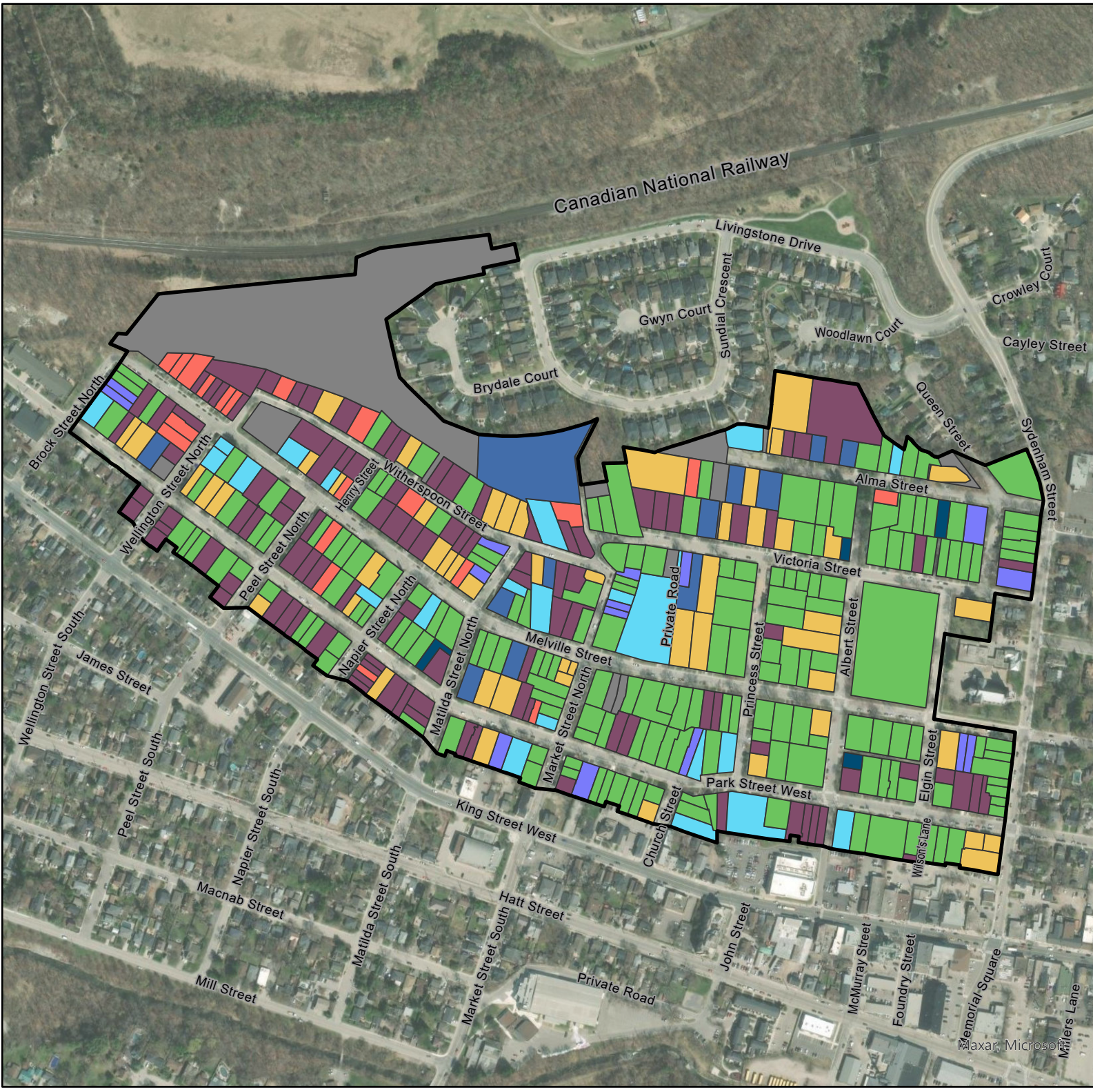
Melville Street Heritage Conservation District  
Dundas  
City of Hamilton, Ontario

## LEGEND

 Study Area

### Building Cladding Main

-  Brick (177)
-  Concrete (15)
-  Pebbledash (20)
-  Stone (22)
-  Stone Veneer (4)
-  Stucco (52)
-  Synthetic (107)
-  Wood (12)
-  N/A (12)



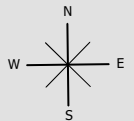
Source: City of Hamilton Open Data (c) 2023,  
Aerial from MAXAR (c) 2021

Date: 27 May 2023

File: 0727AV

Scale: 1:5,500

Drawn: CF



Document Path: K:\0727AV- Dundas Heritage Project\GIS\0727AV\_MelvilleSt\_HeritageInventory\_v2.aprx



PLANNING  
URBAN DESIGN  
& LANDSCAPE  
ARCHITECTURE

200-540 BINGEMANS CENTRE DRIVE, KITCHENER, ON, N2B 3X9 | P: 519.576.3650 | WWW.MHBCPLAN.COM

**Figure 13**  
**Roof Type and Materials**

**Melville Street Heritage Conservation District**  
 Dundas  
 City of Hamilton, Ontario

**LEGEND**

Study Area

Parcels

**Roof Type**

- Combination (45)
- Flat (1)
- Gable (222)
- Gambrel (7)
- Hip (117)
- Jerkinhead (2)
- Mansard (3)
- Saltbox (9)
- Other (6)

**Roof Materials**

- Asphalt Shingle (390)
- Metal (9)
- Slate (1)
- Tar / Gravel (1)
- Tile / Terra Cotta (1)
- Wood Shingle (4)
- Other (6)

Source: City of Hamilton Open Data (c) 2023,  
 Aerial from MAXAR (c) 2021

Date: 27 May 2023

File: 0727AV

Scale: 1:5,500

Drawn: CF

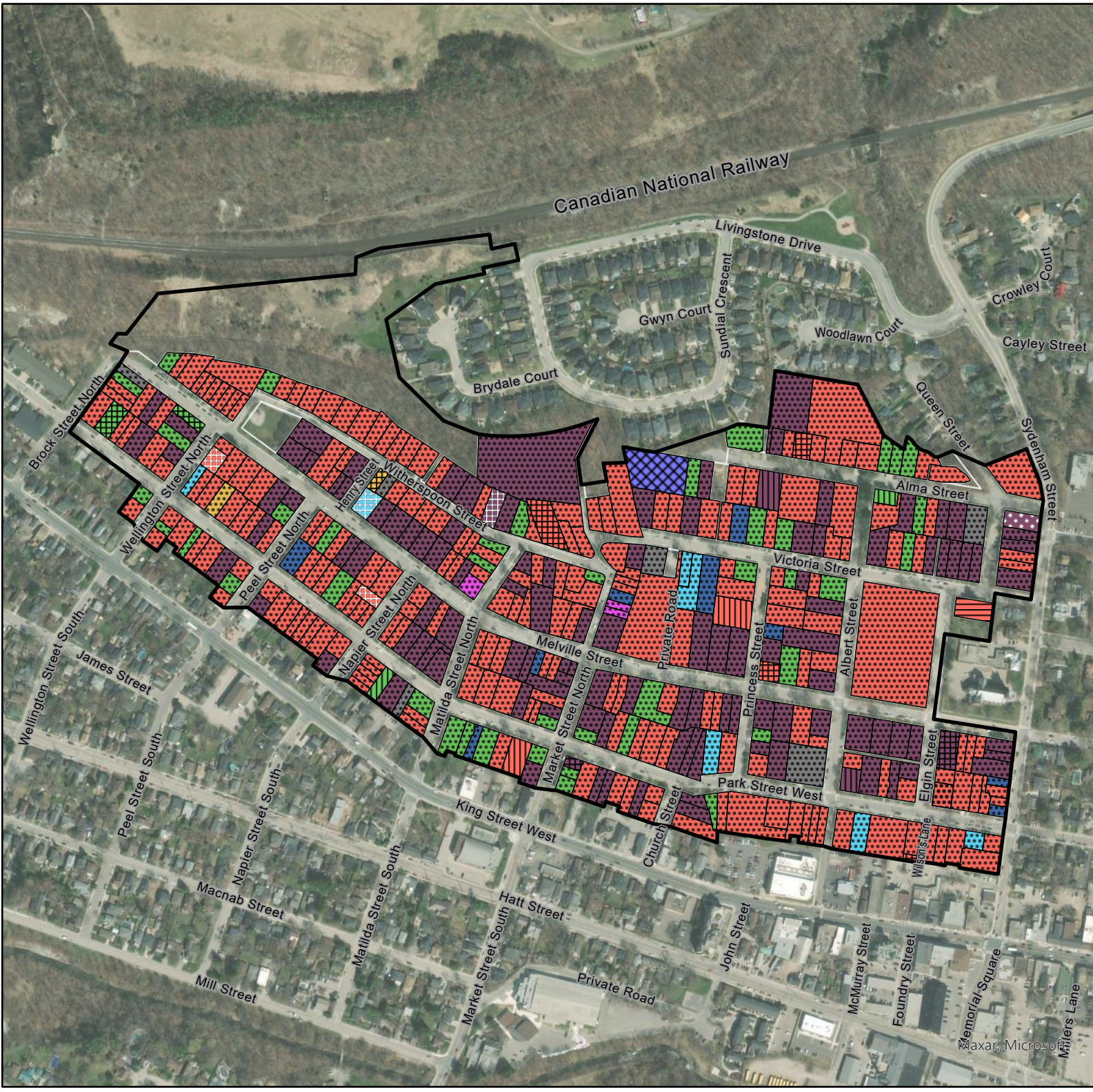


Document Path: K:\0727AV- Dundas Heritage Project\GIS\0727AV\_MelvilleSt\_HeritageInventory\_v2.aprx



**PLANNING  
 URBAN DESIGN  
 & LANDSCAPE  
 ARCHITECTURE**

200-540 BINGEMANS CENTRE DRIVE, KITCHENER, ON, N2B 3X9 | P: 519.576.3650 | WWW.MHBCPLAN.COM



# Figure 14 Parking

Melville Street Heritage Conservation District  
Dundas  
City of Hamilton, Ontario

## LEGEND

Study Area

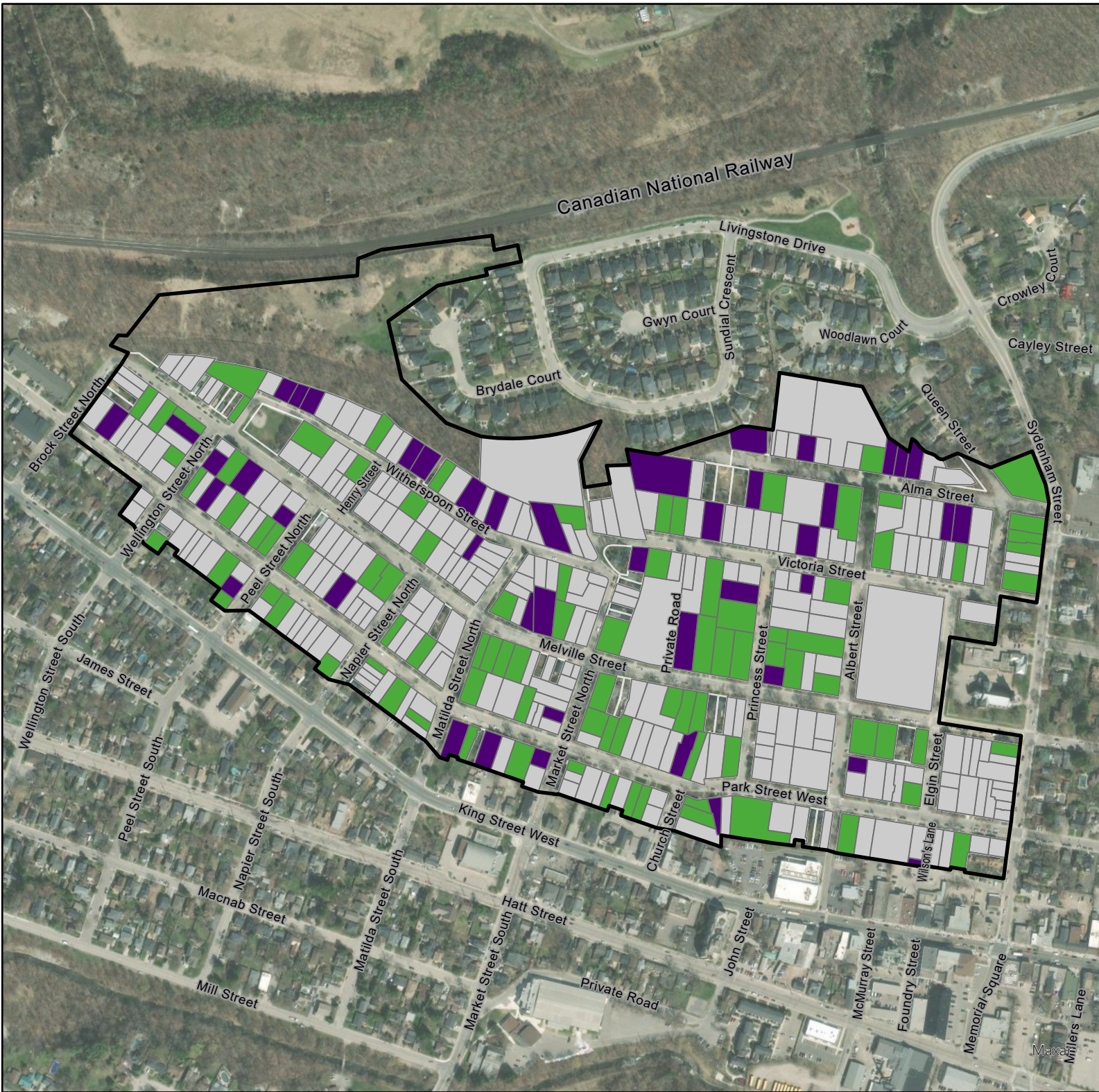
Parcels

## Parking

Attached Garage (44)

Detached Garage (92)

No garage/surface parking (249)



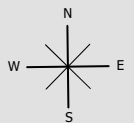
Source: City of Hamilton Open Data (c) 2023,  
Aerial from MAXAR (c) 2021

Date: 27 May 2023

File: 0727AV

Scale: 1:5,500

Drawn: CF



Document Path: K:\0727AV- Dundas Heritage Project\GIS\0727AV\_MelvilleSt\_HeritageInventory\_v2.aprx



PLANNING  
URBAN DESIGN  
& LANDSCAPE  
ARCHITECTURE

200-540 BINGEMANS CENTRE DRIVE, KITCHENER, ON, N2B 3X9 | P: 519.576.3650 | WWW.MHBCPLAN.COM






# Figure 15 Setbacks

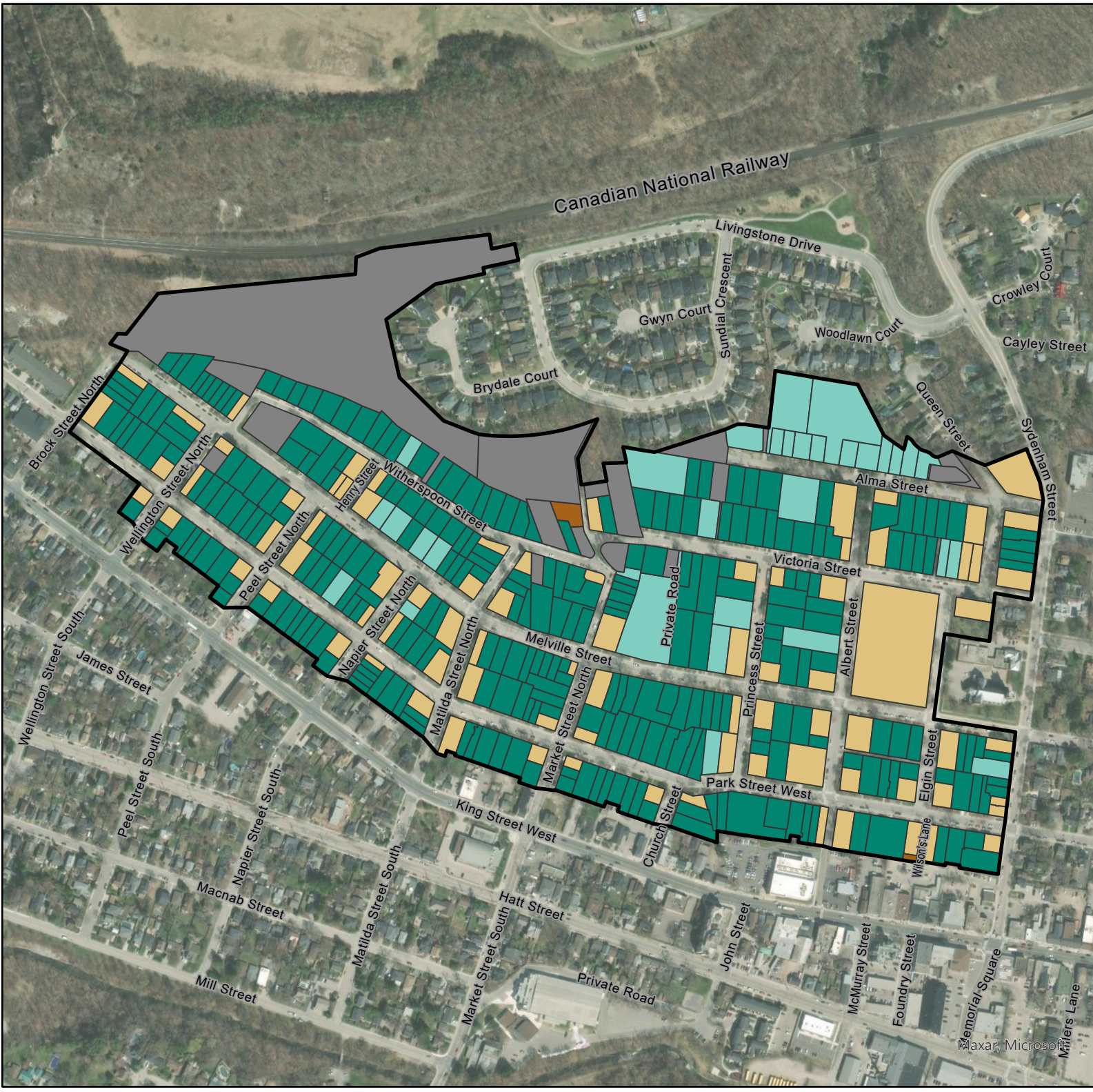
Melville Street Heritage Conservation District  
Dundas  
City of Hamilton, Ontario

### LEGEND

 Study Area

### Setback

-  At ROW (2)
-  Corner Lot (85)
-  Deep (32)
-  Shallow (284)
-  N/A and Other (18)



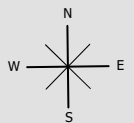
Source: City of Hamilton Open Data (c) 2023,  
Aerial from MAXAR (c) 2021

Date: 28 May 2023

File: 0727AV

Scale: 1:5,500

Drawn: CF



Document Path: K:\0727AV- Dundas Heritage Project\GIS\0727AV\_MelvilleSt\_HeritageInventory\_v2.aprx



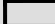
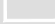

PLANNING  
URBAN DESIGN  
& LANDSCAPE  
ARCHITECTURE

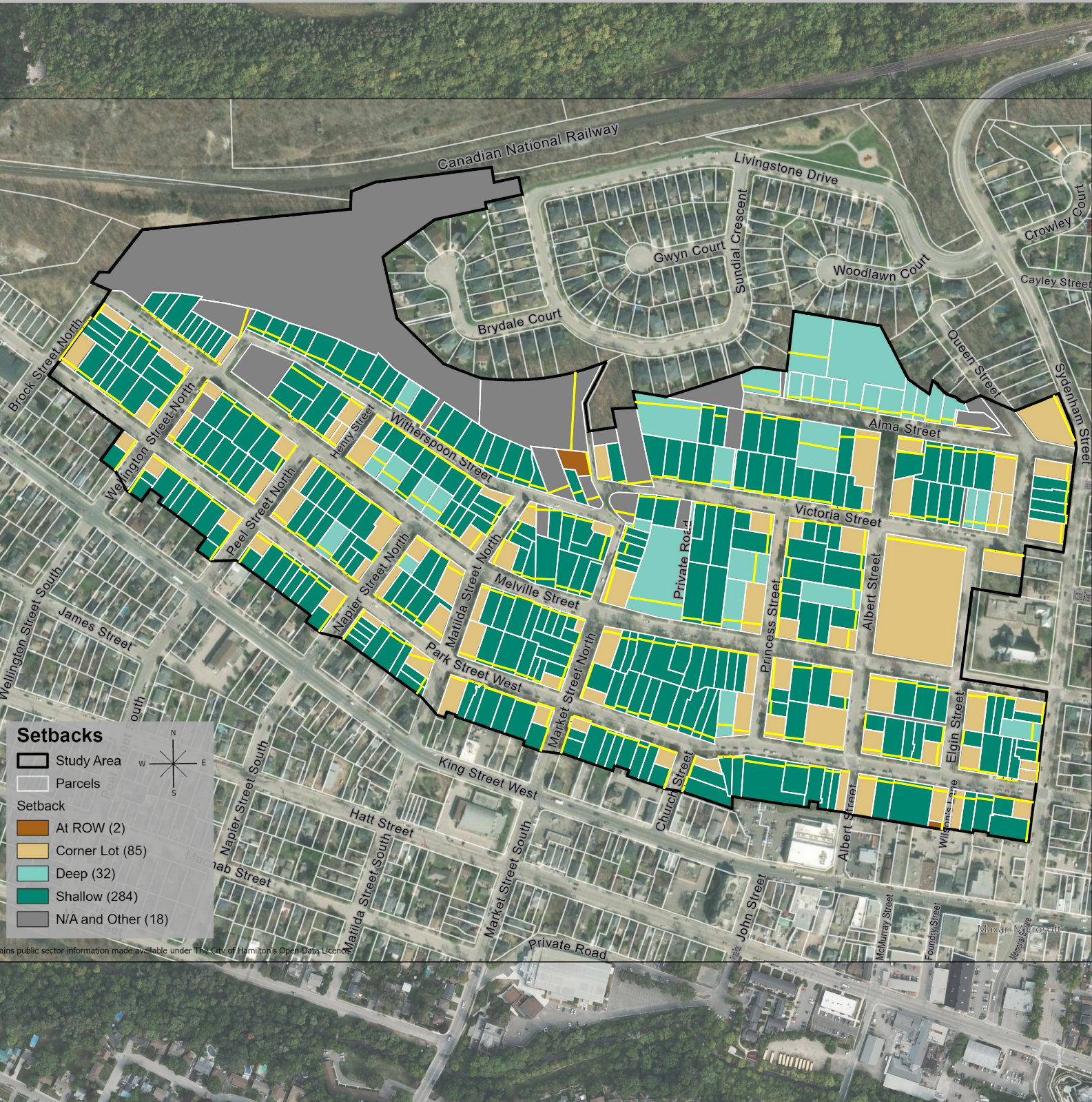
200-540 BINGEMANS CENTRE DRIVE, KITCHENER, ON, N2B 3X9 | P: 519.576.3650 | WWW.MHBCPLAN.COM

# Figure 16 Property Setback Map


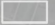
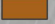


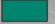
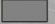
Melville Street  
Dundas, ON  
City of Hamilton

## LEGEND

-  Study Area
-  Property Parcels
-  Building Setbacks



### Setbacks

-  Study Area
-  Parcels
- Setback
-  At ROW (2)
-  Corner Lot (85)
-  Deep (32)
-  Shallow (284)
-  N/A and Other (18)

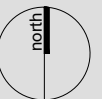
Source: Contains public sector information made available under The City of Hamilton Open Data License; Aerial Photo retrieved from MAXAR (c) 2023

DATE: May 4, 2023

SCALE: n.t.s.

FILE: 0727AV

DRAWN: LC and CCF



K:\0727AV - DUNDAS HERITAGE PROJECT\CAO\SETBACK\_BASEDATA\_04MAY2023.DWG

Figure 17

Infill - Construction Dates

Melville Street Heritage Conservation District  
Dundas  
City of Hamilton, Ontario

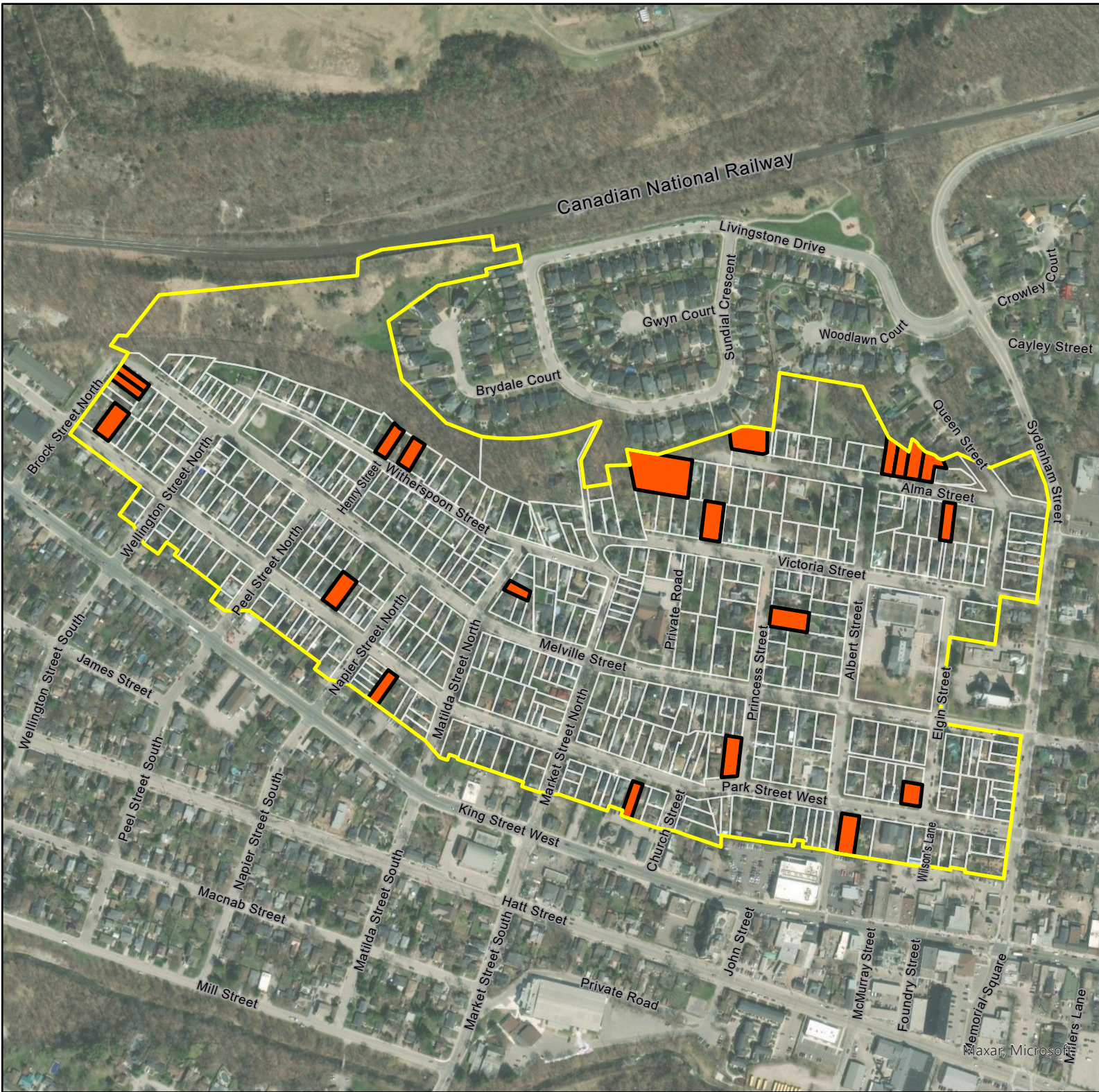
LEGEND

 Study Area

 Parcels

Infill based on Construction Date

 1983+ (21)



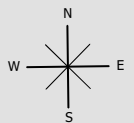
Source: City of Hamilton Open Data (c) 2023,  
Aerial from MAXAR (c) 2021

Date: 28 May 2023

File: 0727AV

Scale: 1:5,500

Drawn: CF



Document Path: K:\0727AV- Dundas Heritage Project\GIS\0727AV\_MelvilleSt\_HeritageInventory\_v2.aprx



PLANNING  
URBAN DESIGN  
& LANDSCAPE  
ARCHITECTURE

200-540 BINGEMANS CENTRE DRIVE, KITCHENER, ON, N2B 3X9 | P: 519.576.3650 | WWW.MHBCPLAN.COM

**Figure 18**  
**Infill - Construction Dates**

Melville Street Heritage Conservation District  
 Dundas  
 City of Hamilton, Ontario

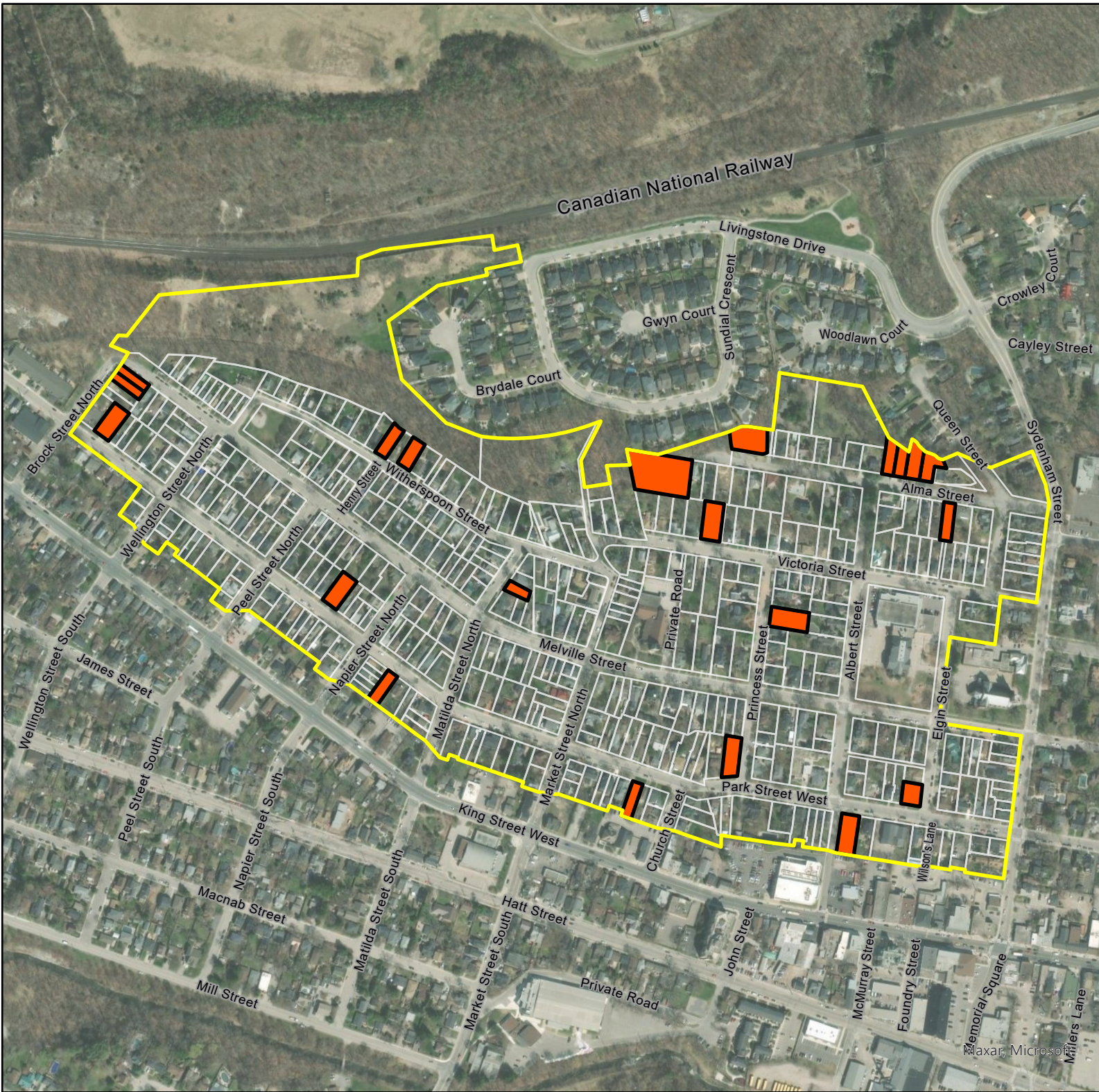
**LEGEND**

 Study Area

 Parcels

Infill based on Construction Date

 1983+ (21)



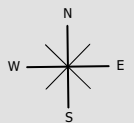
Source: City of Hamilton Open Data (c) 2023,  
 Aerial from MAXAR (c) 2021

Date: 28 May 2023

File: 0727AV

Scale: 1:5,500

Drawn: CF



Document Path: K:\0727AV- Dundas Heritage Project\GIS\0727AV\_MelvilleSt\_HeritageInventory\_v2.aprx



PLANNING  
 URBAN DESIGN  
 & LANDSCAPE  
 ARCHITECTURE

200-540 BINGEMANS CENTRE DRIVE, KITCHENER, ON, N2B 3X9 | P: 519.576.3650 | WWW.MHBCPLAN.COM


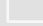






**Figure 20**  
**Contributing Only Properties**

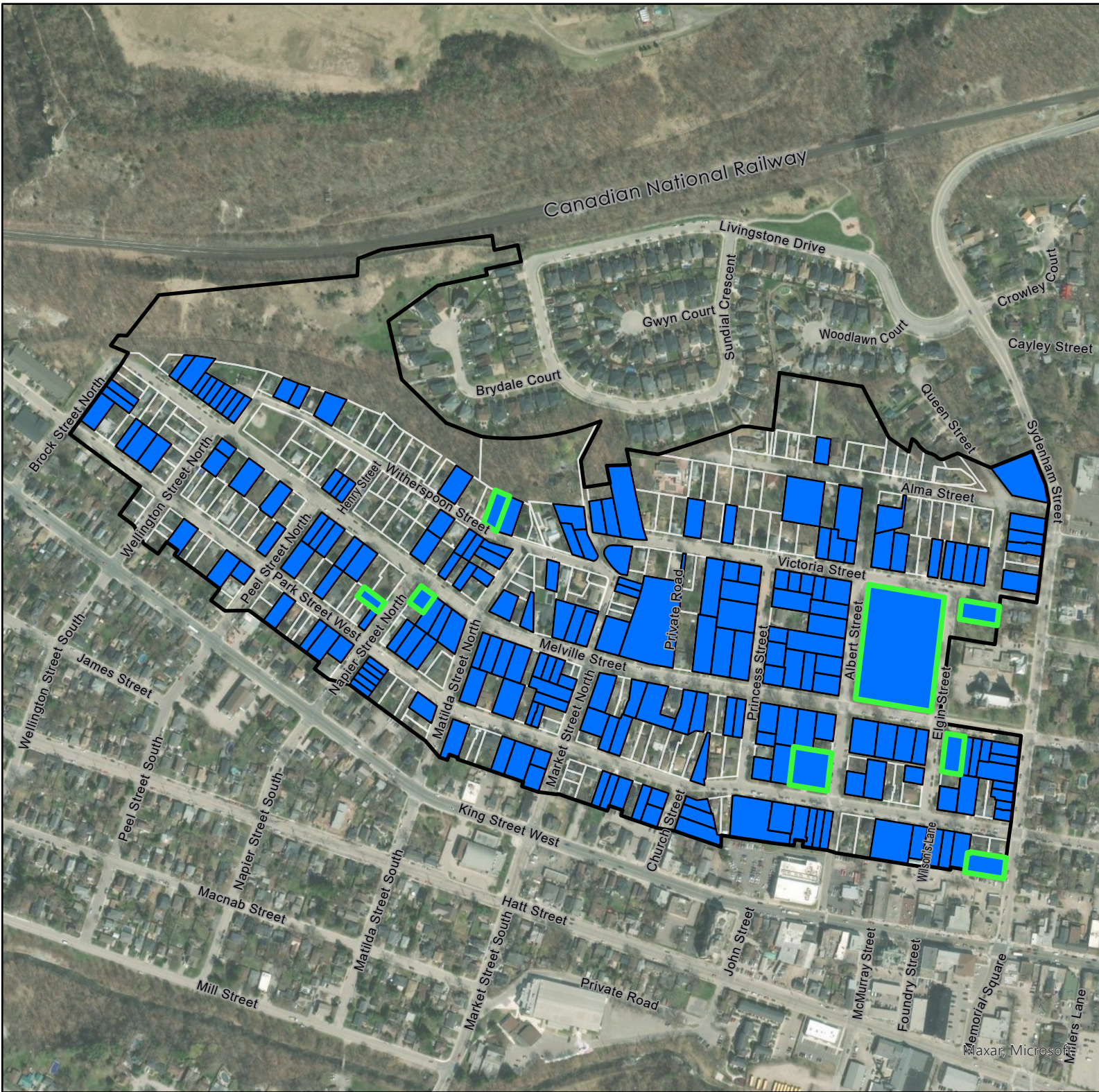
**Melville Street Heritage Conservation District**  
 Dundas  
 City of Hamilton, Ontario

**LEGEND**

-  Study Area
-  Parcels
-  Contributing Properties (211)

**Heritage Status**

-  Designated (Part IV) (8)



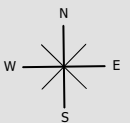
Source: City of Hamilton Open Data (c) 2023,  
 Aerial from MAXAR (c) 2021

Date: 29 May 2023

File: 0727AV

Scale: 1:5,500

Drawn: CF



Document Path: K:\0727AV- Dundas Heritage Project\GIS\0727AV\_MelvilleSt\_HeritageInventory\_v2.aprx



**PLANNING**  
**URBAN DESIGN**  
**& LANDSCAPE**  
**ARCHITECTURE**

200-540 BINGEMANS CENTRE DRIVE, KITCHENER, ON, N2B 3X9 | P: 519.576.3650 | WWW.MHBCPLAN.COM